

# DOORCHIMES

## WIRE FREE DOORCHIMES

02-04

- HELIOS

## WIRED DOORCHIMES

05-12

### Splendor programme

- LUXOR
- TEBAS
- MULTEX
- LUMEN
- ONIX
- EGEO
- STELLA
- SELENE
- LUXOR ELECTRONIC
- TEBAS ELECTRONIC
- MULTEX ELECTRONIC
- ICARO
- Chime and bell transformers
- Doorchime exhibitor

### Classic programme

- BISON 2000
- MIGNON
- BISON
- TRISON
- CLASICO
- MELODIA
- SUPERCARILLON
- ORFEO
- CAMPANA
- ZUMBADOR
- ZUMBI
- DIN rail buzzer
- 16M
- SONELEK
- Industrial bells
- Bell push

DINUY



## WIRE FREE DOORCHIMES

- This new range of wire free doorchime is specially designed for big surface flats and detached houses.
- This range allows you to bring the sound of the doorchime or intercom system everywhere in the house or garden without installation.
- Range up to 200 meters depending on the models.
- Two years warranty.
- Four different melodies.
- Manufactured according to the European directives 73/23/EEC (modified by the 93/68 EEC) and 89/338/EEC (modified by the 92/31/EEC and the 93/68/EEC) relating to the product safety and electromagnetic compatibility. The wire free doorchimes fulfil with the directive 1999/5/ECC for radioelectric equipments and for the telecommunication terminals equipment and its mutual conformity acknowledgement. For this purpose the following non harmonised rules have been applied: ETS 300 683 (1997) and UNE-I-ETS 300220(Sep 1995). We have obtained the following technical reports: LABEIN N° - B121-00/02(1)-EE-1/1 and LABEIN N° - B131/00-15-EE-1.
- The basic kit comprises a bell push transmitter and a portable chime receiver.
- When the bell push is activated, it sends a radio signal to the chime receiver and this one plays a melody.

## HELIOS

### BELL PUSH TRANSMITTER

- The transmitter can be installed either outside or inside, but never on a metallic surface. It can be fixed directly to the front door or a nearby wall with screws.
- Powered by a 3 V battery type CR2032 included.
- A single doorchime can be activated from up to 4 different transmitters with 4 different melodies if required.
- It is necessary to program a different melody from each transmitter and once this is done, the receiver will play a specific melody depending on which transmitter sends the signal.



### DOORCHIME RECEIVER

- Battery operated (4 x 1.5 V batteries type R6 not included) or plug-in (depending on references).
- It is completely portable and works in a range in open field from 100 to 200 meters depending on references.
- Receivers have different encoded channels, so that they do not mutually interfere with other radio operated items in the service area and prevent false triggering.
- All of the models are fitted with an ON-OFF switch, so that they can be deactivated if required.



### CALL EXTENSION - EXTENDER TRANSMITTERS

- This application is designed for houses in which the sound of the doorchime or intercom system is not heard in some places of the house or garden.
- By installing the transmitter (there are specific models of transmitter to do it, please see technical details) in parallel with the existing 110-230 V. doorchime or 8-12 V. doorchime or intercom system, the Helios doorchime will sound simultaneously with the existing system.
- Helios doorchime can be placed everywhere around the house or garden inside the range.



## HELIOS

### 1. BELL PUSH TRANSMITTERS AND DOORCHIME RECEIVERS KITS



**TI HEB K21** Helios 200 meters range.

**TI HEB K05** Helios 100 meters range.

- Portable and without wires.
- Power supply: Doorchime receiver; 4 x 1,5 batteries type R6 (not included).  
Bell push transmitter; 1 x 3 volts type CR 2032 (included).
- Four different melodies to choose.
- Bell push transmitter with IP 44.



**TI HEB K23** Plug in Helios 200 meters range.

**TI HEB K06** Plug in Helios 100 meters range.

- Portable and without wires.
- Power supply: Doorchime receiver; 230 volts from the mains.
- Bell push transmitter 1 x 3 volts type CR 2032 (included).
- Four different melodies to choose.
- Bell push transmitter with IP 44.

### 2. EXTRA DOORCHIME RECEIVERS



- Extra receivers are available to work at the same time as the Kit receiver.

**TI HEB B20** Doorchime receiver (without bell push) 200 meters range.

**TI HEB BAT** Doorchime receiver (without bell push) 100 meters range.

- Doorchime receivers without bell push transmitters to operate with an existing Helios system.
- Portable and without wires.
- Power supply: Doorchime receiver; 4 x 1,5 batteries type R6 (not included).

**TI HEB 221** Plug in doorchime receiver (without bell push) 200 meters range.

**TI HEB 220** Plug in doorchime receiver (without bell push) 100 meters range.

- Plug-in doorchime receiver without bell push transmitter.
- Portable and without wires.
- Power supply: Doorchime receiver; 230 volts from the mains.

- Models 200 meters range are designed to work with 200 meters Helios transmitters.
- Models 100 meters range are designed to work with 100 meters Helios transmitters.



## HELIOS

### 3. EXTRA TRANSMITTERS

- Extra transmitters available for a second door or call point.

**EM HEB 020** Extra bell push transmitter 200 meters range.

**EM HEB 001** Extra bell push transmitter 100 meters range.

**EM HEB 023** Extra transmitter (without bell push) 200 meters range.

**EM HEB 006** Extra transmitter (without bell push) 100 meters range.

- Useful to make the doorchime works from more than one transmitter.
- Models 200 meters range are designed to work with 200 meters HELIOS doorchimes.
- Models 100 meters range are designed to work with 100 meters HELIOS doorchimes.
- Models with bell push have an IP 44.
- Models without bell push are designed to be installed with any push from the market. Useful to be installed with a decorative pushbutton
- Maximum 5 transmitters for each doorchime receiver.
- Power supply: 1 x 3 volts battery type CR 2032 (included).



### 4. CALL EXTENSIONS - EXTENDER TRANSMITTERS

- Extra extender transmitters available to operate with existing doorchimes and intercom system.

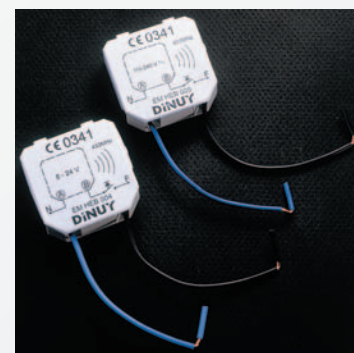
**EM HEB 021** Extra transmitter 200 meters range for an 8-12 volts doorchime call extension.

**EM HEB 004** Extra transmitter 100 meters range for an 8-12 volts doorchime call extension.

**EM HEB 022** Extra transmitter 200 meters range for a 230 volts doorchime call extension.

**EM HEB 005** Extra transmitter 100 meters range for a 230 volts doorchime call extension.

- Models 200 meters range are designed to work with 200 meters HELIOS doorchimes.
- Models 100 meters range are designed to work with 100 meters HELIOS doorchimes.
- To be installed in junction box.
- Installation in parallel with the doorchime or intercom system.
- Power supply: 1 x 3 volts battery type CR2032 (included)
- Four different melodies to choose to know the origin of the call. (Frontdoor, intercom system, back door, etc.)



## WIRED DOORCHIMES

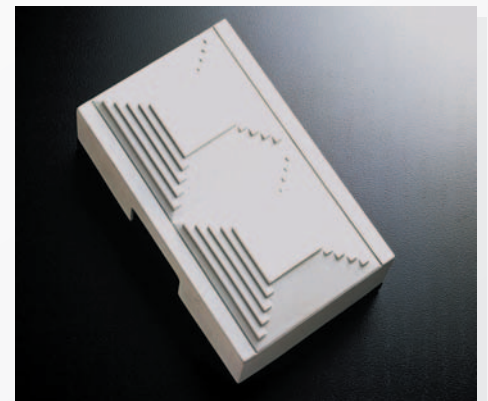
### 1. SPLENDOR PROGRAMME

- You can find in this range electromechanical doorchimes with different wiring possibilities:
  - Battery operated.
  - Incorporating transformers.
  - For external transformers.
  - Direct to the net.
- There are also electronic types with different melodies and sounds.
- Most of the models in this range can be supplied either in carton or blister packaging.

### LUXOR

- Electromechanical doorchime.
- Two notes.
- The front cover illustration shows two quadrangular and graded pyramids.
- Colour: white cover and black base.

REFERENCE	TI LXO 008	TI LXO TFO	TI LXO BAT
VOLTAGE	8V	INCORPORATING TRANSFORMER 230/8V~	4 BATT x 1,5V TYPE R14
DIMENSIONS	105 x 170 x 44,5 mm		



### TEBAS

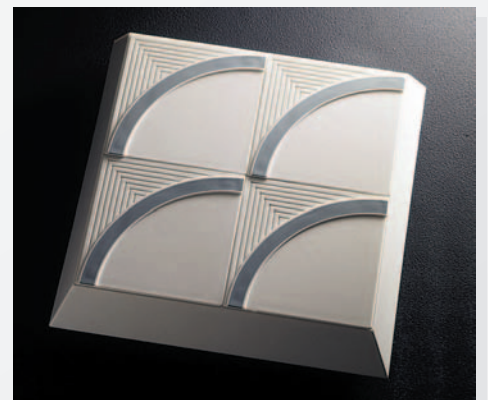
- Electromechanical doorchime.
- Two notes.
- The front cover illustration shows three triangular prisms joined.
- Colour: white cover and black base.

REFERENCE	TI TBA 008	TI TBA TFO	TI TBA BAT
VOLTAGE	8V	INCORPORATING TRANSFORMER 230/8V~	4 BATT x 1,5V TYPE R14
DIMENSIONS	105 x 170 x 44,5 mm		

### MULTEX

- Electromechanical doorchime.
- Two notes.
- The cover of this doorchime is a puzzle of four pieces which can be easily interchanged to create up to 256 different figures.
- Colour: white cover with a grey line and black base.

REFERENCE	TI MUL 008	TI MUL TFO	TI MUL BAT
VOLTAGE	8V	INCORPORATING TRANSFORMER 230/8V~	4 BATT x 1,5V TYPE R14
DIMENSIONS	200 x 200 x 47,5 mm		





## LUMEN

- Electromechanical doorchime.
- Two notes.
- The front cover illustration shows an allegory of the light.
- Colour: white cover and black base.

REFERENCE	TI LUM 008	TI LUM TFO
VOLTAGE	8V	INCORPORATING TRANSFORMER 230/8V~
DIMENSIONS	115 x 115 x 44,5 mm	



- Electromechanical doorchime.
- Two notes.
- The front cover illustration shows a cutting stone.
- Colour: white cover and black base.

REFERENCE	TI ONI 008	TI ONI TFO
VOLTAGE	8V	INCORPORATING TRANSFORMER 230/8V~
DIMENSIONS	115 x 115 x 44,5 mm	

## ONIX

## EGEO

- Electromechanical doorchime.
- Two notes.
- Colour: white cover and black base.

REFERENCE	TI EGE 008	TI EGE TFO
VOLTAGE	8V	INCORPORATING TRANSFORMER 230/8V~
DIMENSIONS	115 x 115 x 55 mm	



- Electromechanical doorchime.
- Two notes.
- The front cover illustration shows a megalithic monument.
- Colour: white cover and black base.

REFERENCE	TI STE 008	TI STE TFO
VOLTAGE	8V	INCORPORATING TRANSFORMER 230/8V~
DIMENSIONS	Ø170 x 44,5 mm	

## STELLA

## SELENE



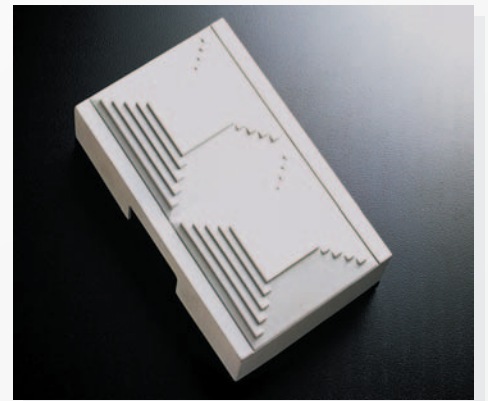
- Electromechanical doorchime.
- Two notes.
- Colour: white cover and black base.

REFERENCE	TI SEL 220	TI SEL TFO	TI SEL BAT
VOLTAGE	230V~	INCORPORATING TRANSFORMER 230/8V~	4 BATT x 1,5V TYPE R14
DIMENSIONS	125 x 210 x 48 mm		

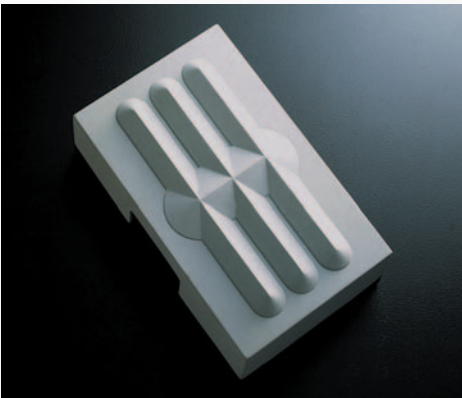
## LUXOR ELECTRONIC

- Electronic doorchime.
- Two notes.
- Power supply: It needs a 9 volts battery type 6F22
- The front cover illustration shows two quadrangular and graded pyramids.
- Colour: white cover and black base.

REFERENCE	TI LXO ELO	TI LXO EL1
VOLTAGE	110 - 230V~	0-24V
DIMENSIONS	105 x 170 x 44,5 mm	

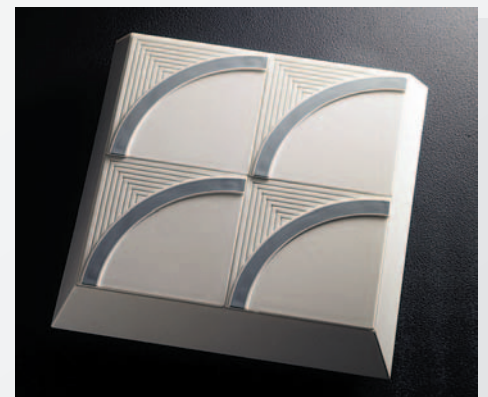


## TEBAS ELECTRONIC



- Electronic doorchime.
- 8 different melodies. Every time the push button is pressed a different melody sounds. Every melody last for approximately 10 seconds.
- Power supply: Doorchime receiver; 4 x 1,5 batteries type R6 (not included).
- The front cover illustration shows three triangular prisms joined.
- Colour: white cover and black base.

REFERENCE	TI TBA ELO	TI TBA EL1
VOLTAGE	110 - 230V~	0-24V
DIMENSIONS	105 x 170 x 44,5 mm	



## MULTEX ELECTRONIC

- Electronic doorchime.
- Three notes.
- Power supply: it needs a 9V battery type 6F22.
- The cover of this doorchime is a puzzle of four pieces which can be easily interchanged to create up to 256 different figures.
- Colour: white cover with a grey line and black base.

REFERENCE	TI MUL ELO	TI MUL EL1
VOLTAGE	110 - 230V~	0-24V
DIMENSIONS	200 x 200 x 47,5 mm	



## ICARO

- Electronic doorchime.
- Two different calls.
- Can be installed with two different bell pushes.
- Power supply: Doorchime receiver; 4 x 1,5 batteries type R6 (not included).
- Colour: white cover and black base.

REFERENCE	TI ICA ELO	TI ICA EL1
VOLTAGE	110 - 230V~	0-24V
DIMENSIONS	125 x 189 x 48,5 mm	



## Chime and bell transformers

- These two transformers offer both DIN rail and surface mounting.
- Are built according to IEC 742 (EN 61558/2/8) international standards.

REFERENCE	TF 220 008	TF 220 012
VOLTAGE	230V/8V~1.0A	230V/12V~0.5A
DIMENSIONS	90 x 35 x 53 mm	

## Doorchime exhibitor

REFERENCE	TI EXP 001	TI EXP 008
DOORCHIMES	MIGNON, MELODIA, ORFEO CLASICO, BISON, BISON 2000 ZUMBI, 16M, CAMPANA	EGEO, ONIX, LUMEN, STELLA TEBAS ELECTRONICO, LUXOR, MULTEX, ICARO, SELENE AND TRANSFORMER
MODELS	CLASSIC PROGRAM (9 MODELS)	SPLENDOR PROGRAM (9 MODELS)
VOLTAGE	230V~	
DIMENSIONS	800 x 600mm	





## 2. CLASSIC PROGRAMME

- You can find in this range different designs and sound for 230 volts and also 127 volts doorchimes.
- Models with tubes, bells, buzzers, industrial bells, etc.
- Some of them can be supplied either in carton or blister packaging.



### BISON 2000

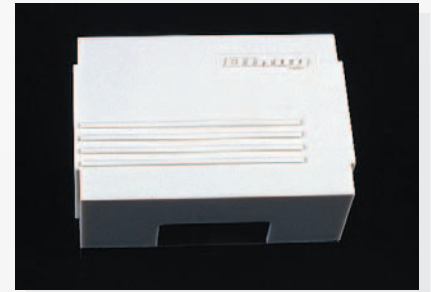
REFERENCE	TI B12 000
VOLTAGE	110 - 230V~
DIMENSIONS	135 x 79 x 50 mm

- Electromechanical doorchime.
- Two notes.
- Colour: ivory cover and brown base.

### MIGNON

- Electromechanical doorchime.
- Two notes.
- Colour: ivory cover and brown base.

REFERENCE	TI MIG 000
VOLTAGE	110 - 230V~
DIMENSIONS	114 x 78 x 52 mm



### BISON

REFERENCE	TI BIS 000
VOLTAGE	110 - 230V~
DIMENSIONS	147 x 82 x 55 mm

- Electromechanical doorchime.
- Two notes.
- Colour: ivory cover with a gold strip and brown base.

### TRISON

- With the same characteristics as Bison.
- This model incorporates a buzzer
- I can be connected with two different bellpushes and obtain two different calls.
- Colour: ivory cover and brown base.

REFERENCE	TI TRI 220
VOLTAGE	230V~
DIMENSIONS	147 x 82 x 55 mm





## CLASICO

- Electromechanical doorchime.
- Two notes.
- Colour: ivory cover with gold letters and brown base.

REFERENCE	TI CLA 000
VOLTAGE	110 - 230V~
DIMENSIONS	145 x 78 x 52 mm



## MELODIA



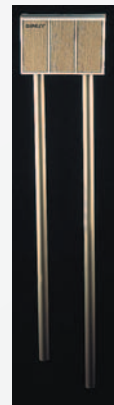
REFERENCE	TI MEL 000
VOLTAGE	110 - 230V~
DIMENSIONS	165 x 112 x 52 mm

- Electromechanical doorchime.
- Two notes.
- Colour: ivory cover with wooden imitation front brown base.

## SUPERCARILLON

- Electromechanical doorchime with two brass tubes.
- Two notes.
- Colour: ivory cover with wooden imitation front and gold tubes.

REFERENCE	TI SUP 220
VOLTAGE	230V~
DIMENSIONS	BOX
	186 x 127 x 72 mm
	TUBES
	818-740 x 25 Ømm



## ORFEO



REFERENCIA	TI ORF 220
TENSION	230V~
DIMENSIONES	BOX
	186 x 127 x 72 mm
	TUBES
	210 x 45Ømm

- Electromechanical doorchime with two plates inside two aluminium tubes.
- Two notes.
- Colour: ivory cover with wooden imitation front and gold tubes.

## CAMPANA



REFERENCE	TI CAM 220
VOLTAGE	230V~
DIMENSIONS	83 x 83 x 45 mm

- Electromechanical doorchime.
- Doorchime with a bell sound.
- The bell is under the cover
- Colour: ivory cover and brown base.
- Connection: only for A. C.

## ZUMBADOR

- Electromechanical doorchime.
- Doorchime with a buzzer sound.
- Colour: ivory cover and brown base.
- Connection: only for A. C.

REFERENCE	TI ZUM 220
VOLTAGE	230V~
DIMENSIONS	83 x 83 x 45 mm



## ZUMBI



REFERENCE	TI ZBI 000
VOLTAGE	110 - 230V~
DIMENSIONS	45 x 26 x 30 mm

- Electromechanical small size buzzer.
- Colour: white cover.
- Connection: only for A. C.

## DIN rail buzzer

- Electromechanical buzzer.
- For DIN rail 46277 or surface mounting.
- Two module wide box 35mm.
- Colour: grey.
- Connection: only for A. C.

REFERENCE	TI ZMI 000	TI ZMI 008
VOLTAGE	110 - 230V~	8V~
DIMENSIONS	90 x 35 x 53 mm	

